

Instructions for the whole machine test

focal

shenzhen FP team

20221221

CONTENTS

01

Test item description

02

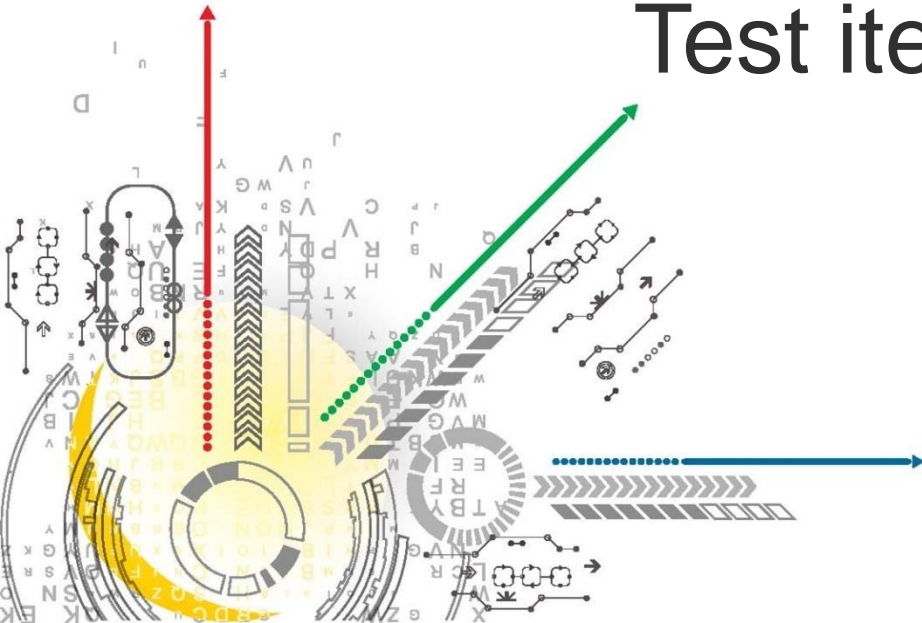
Test the steps

03

Automated testing

01 SECTION

Test item description



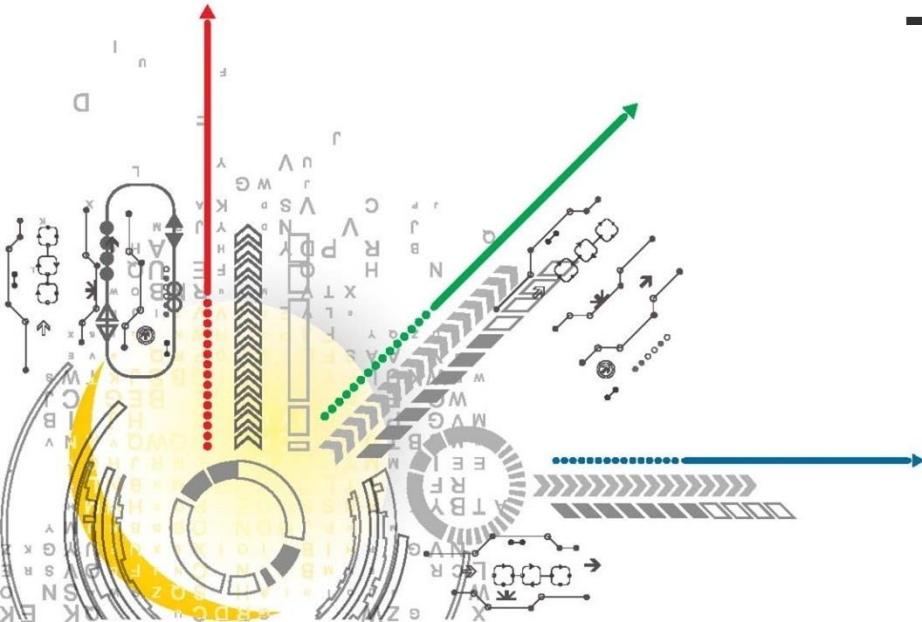
Test item description

Test item	description
Security Verify	Security data verification(ESS, SDCP)
MCU info test	Read fw version
Reset Test	Reset pin open short circuit test
INT test	INT pin open short circuit test
Sensor Bad Test	Sensor bad point test
Image Quality Test	Image Quality Test

If pass, the tool will prompt
"Security data verificate OK".

02 SECTION

Test the steps



Manual test method

step1 :Click here to start the test

step2: When prompted here,
place your finger on the fingerprint module

and wait for the test to complete

FocaltechFpTest—V1.0.10

85%

ImgQualityTest

**Press for test
Count down: 5s**

```

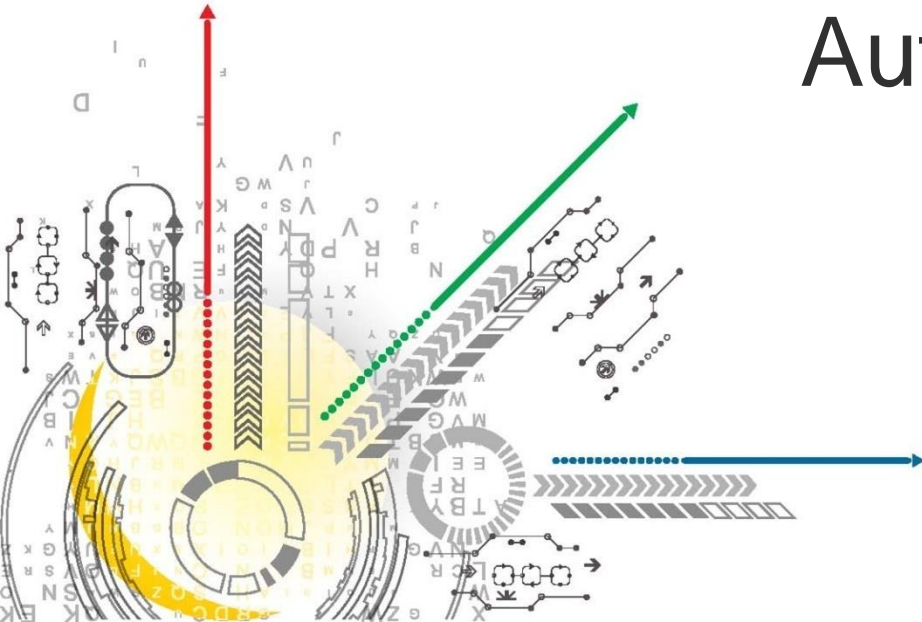
Reset test OK
Start int test
Int test OK

Start sensor bad point test
FirstData:
firstmax: 3611, firstmin: 3125, firstavg: 3467.96
DAC step: 18
SecondData:
offmax: 642, offmin: 468, offavg: 549.64
Sensor bad point test OK

Start image quality test
Please press your finger for test
    
```

03 SECTION

Automated testing



Automatic test configuration mode 1

step1 :Ctrl+S enter the settings interface

Open automatic test mode

step2:Close manual intervention test item

ImageQualityTest

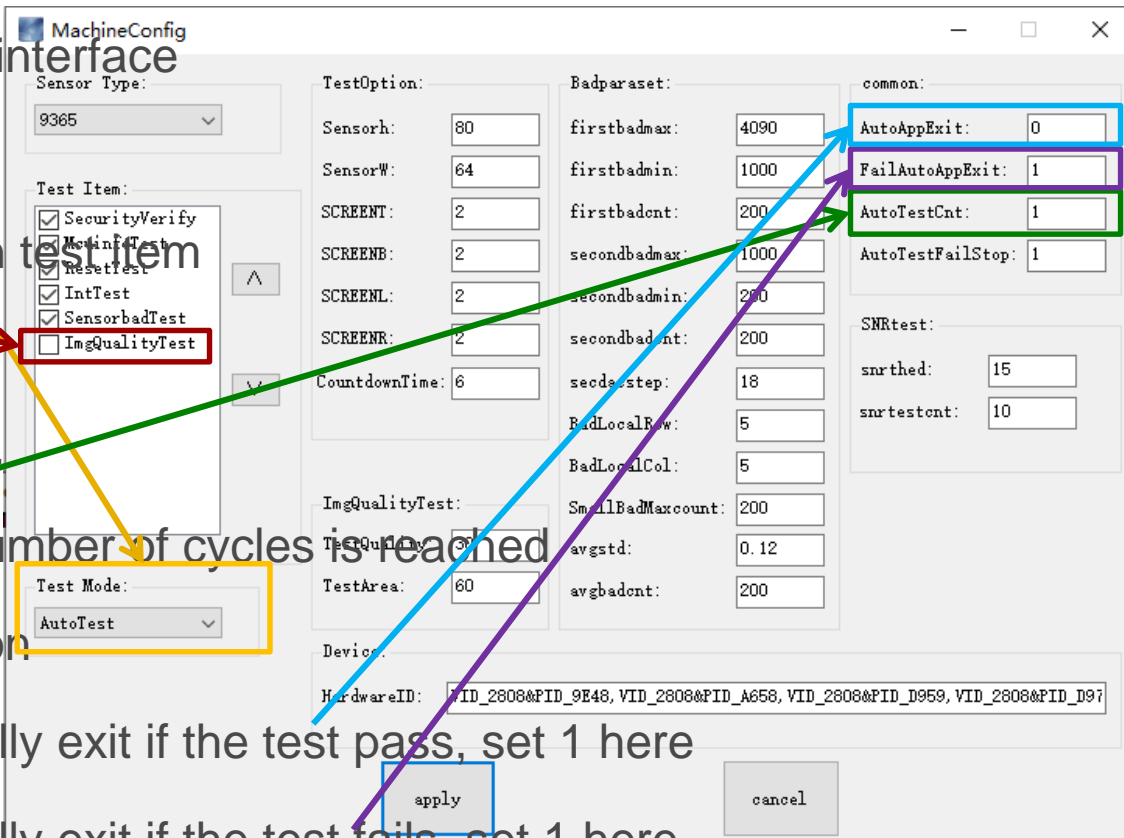
step3: Set the number of cycles.

The test will not stop until the number of cycles is reached

or the user clicks the 'stop' button

step4: If you want to automatically exit if the test pass, set 1 here

step5: If you want to automatically exit if the test fails, set 1 here



Automatic test configuration mode 2

step1: Open the AppConfig.ini

testmode=1: Open the tool and start the test automatically. (Open automatic test mode)

testmode=0: Open the tool and start the test manually.

step2: Close the following manual intervention test items

ImageQualityTest=0

step3: Set the number of cycles.

The test will not stop until the number of cycles is reached or the user clicks the 'stop' button.

AutoTestCnt=3000

step4: If you want to automatically exit if the test fails, set 1

FailAutoAppExit=1

step5: If you want to automatically exit if the test pass, set 1

AutoAppExit=1

**Note: Directly modify AppConfig.ini file.
After modification, you need to reopen
the tool.**



THANKS

Copyright ©2018 FocalTech Systems Co., Ltd. All Rights Reserved.

The information in this document may contain predictive statements including, without limitation, statements regarding the future financial and operating results, future product portfolio, new technology, etc. There are a number of factors that could cause actual results and developments to differ materially from those contained in the predictive statements. Therefore, such information is provided for reference purpose only and constitutes neither an offer nor an acceptance. FocalTech makes no warranties, express, implied or otherwise, regarding the accuracy or completeness of those information. FocalTech may change the information at any time without keeping recipients updated of any information contained in this document.

